

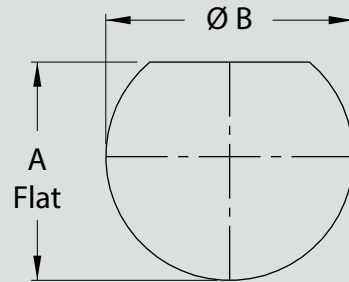
SERIES 80

# Mighty Mouse Connectors and Cables



## Jam-Nut, Rear Panel Mount, Cutout Dimensions Series 800, 801, and 802

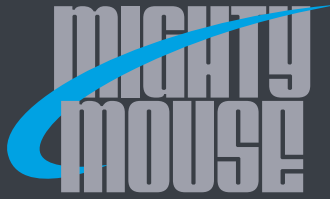
### SERIES 800, 801, 802 REAR PANEL MOUNT, JAM-NUT PANEL CUTOUT DIMENSIONS



Rear Panel Mount Connectors

800 Series			801 Series			802 Series		
ShellSize	A Flat	ØB	ShellSize	AFlat	ØB	ShellSize	AFlat	ØB
5	.295 (7.49)	.322 (8.18)	5	.358 (9.09)	.385 (9.78)	5	.475 (12.07)	.510 (12.95)
	.291 (7.39)	.317 (8.05)		.354 (8.99)	.380 (9.65)		.471 (11.96)	.505 (12.83)
6	.362 (9.19)	.385 (9.78)	6	.418 (10.62)	.448 (11.38)	6	.605 (15.37)	.635 (16.13)
	.358 (9.09)	.380 (9.65)		.414 (10.52)	.443 (11.25)		.601 (15.27)	.630 (16.00)
7	.428 (10.87)	.448 (11.38)	7	.544 (13.82)	.572 (14.53)	7	.664 (16.87)	.698 (17.73)
	.424 (10.77)	.443 (11.25)		.540 (13.72)	.567 (14.40)		.660 (16.76)	.693 (17.60)
8	.483 (12.27)	.510 (12.95)	8	.544 (13.82)	.572 (14.53)	8	.737 (18.72)	.760 (19.30)
	.479 (12.17)	.505 (12.83)		.540 (13.72)	.567 (14.40)		.733 (18.62)	.755 (19.18)
9	.540 (13.72)	.572 (14.53)	9	.604 (15.34)	.635 (16.13)	9	.786 (19.96)	.822 (20.88)
	.536 (13.61)	.567 (14.40)		.600 (15.24)	.630 (16.00)		.782 (19.86)	.817 (20.75)
10	.614 (15.60)	.635 (16.13)	10	.668 (16.97)	.698 (17.73)	10	.837 (21.26)	.885 (22.48)
	.610 (15.49)	.630 (16.00)		.664 (16.87)	.693 (17.60)		.833 (21.16)	.880 (22.35)
12	.722 (18.34)	.760 (19.30)	11	.726 (18.44)	.760 (19.30)	12	.901 (22.89)	.948 (24.08)
	.718 (18.24)	.755 (19.18)		.722 (18.34)	.755 (19.18)		.897 (22.78)	.943 (23.95)
14	.856 (21.74)	.885 (22.48)	13	.853 (21.67)	.885 (22.48)	14	1.087 (27.61)	1.135 (28.83)
	.852 (21.64)	.880 (22.35)		.849 (21.56)	.880 (22.35)		1.083 (27.51)	1.130 (28.70)
15	.918 (23.32)	.947 (24.05)	16	1.030 (26.16)	1.072 (27.23)	15	1.157 (29.39)	1.198 (30.43)
	.914 (23.22)	.942 (23.93)		1.026 (26.06)	1.067 (27.10)		1.153 (29.29)	1.193 (30.30)
			17	1.104 (28.04)	1.135 (28.83)			
				1.100 (27.94)	1.130 (28.70)			
			19	1.235 (31.37)	1.260 (32.00)			
				1.231 (31.27)	1.255 (31.88)			
			21	1.355 (34.42)	1.385 (35.18)			
				1.351 (34.32)	1.380 (35.05)			

General Information and Reference



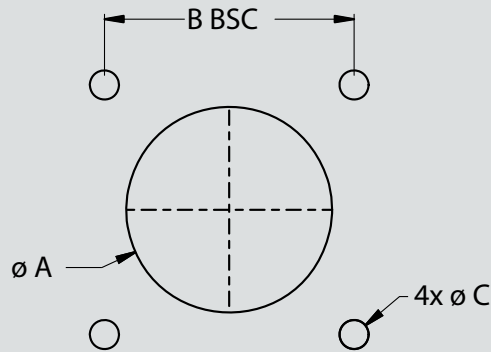
SERIES 80

Mighty Mouse Connectors and Cables



Square Flange Panel Cutout Dimensions

**SERIES 800, 801, 802, AND 805 SQUARE FLANGE PANEL CUTOUT DIMENSIONS**



Series 800				Series 801				Series 802				Series 805			
Shell Size	Ø A	B BSC	Ø C	Shell Size	Ø A	B BSC	Ø C	Shell Size	Ø A	B BSC	Ø C	Shell Size	Ø A	B BSC	Ø C
5	.328 (8.33)	.363 (9.22)	.098 (2.49) .094 (2.39)	5	.328 (8.33)	.363 (9.22)	.096 (2.44) .091 (2.31)	5	.332 (8.43)	.500 (12.70)	.125 (3.18)	8	.5155 (13.09)	.660 (16.76)	.096 (2.44) .091 (2.31)
6	.390 (9.91)	.423 (10.74)	.098 (2.49) .094 (2.39)	6	.390 (9.91)	.423 (10.74)	.096 (2.44) .091 (2.31)	6	.389 (9.88)	.625 (15.88)	.125 (3.18)	9	.578 (14.68)	4.723 (119.96)	.096 (2.44) .091 (2.31)
7	.453 (11.51)	.483 (12.27)	.132 (3.35) .128 (3.25)	7	.453 (11.51)	.483 (12.27)	.096 (2.44) .091 (2.31)	7	.515 (13.08)	.688 (17.48)	.125 (3.18)	10	.640 (16.26)	.785 (19.94)	.096 (2.44) .091 (2.31)
8	.515 (13.08)	.542 (13.77)	.132 (3.35) .128 (3.25)	8	.515 (13.08)	.545 (13.84)	.096 (2.44) .091 (2.31)	8	.567 (14.40)	.7450 (18.92)	.125 (3.18)	11	.7403 (18.80)	.848 (21.54)	.096 (2.44) .091 (2.31)
9	.578 (14.68)	.719 (18.26)	.132 (3.35) .128 (3.25)	9	.578 (14.68)	.607 (15.42)	.130 (3.30) .126 (3.20)	9	.639 (16.23)	.812 (20.62)	.125 (3.18)	12	.765 (19.43)	.909 (23.09)	.096 (2.44) .091 (2.31)
10	.640 (16.26)	.719 (18.26)	.132 (3.35) .128 (3.25)	10	.640 (16.26)	.670 (17.02)	.130 (3.30) .126 (3.20)	10	.694 (17.63)	.875 (22.23)	.125 (3.18)	13	.828 (21.03)	.973 (24.71)	.096 (2.44) .091 (2.31)
12	.765 (19.43)	.812 (20.62)	.132 (3.35) .128 (3.25)	11	.703 (17.86)	.715 (18.16)	.130 (3.30) .126 (3.20)	12	.770 (19.56)	.938 (23.83)	.125 (3.18)	15	.953 (24.21)	1.058 (26.87)	.130 (3.30) .126 (3.20)
14	.890 (22.61)	.906 (23.01)	.132 (3.35) .128 (3.25)	13	.828 (21.03)	.812 (20.62)	.130 (3.30) .126 (3.20)	14	.9415 (23.91)	1.125 (28.58)	.125 (3.18)	18	1.140 (28.96)	1.255 (31.88)	.130 (3.30) .126 (3.20)
15	.953 (24.21)	.969 (24.61)	.132 (3.35) .128 (3.25)	16	1.015 (25.78)	.981 (24.92)	.130 (3.30) .126 (3.20)	15	1.020 (25.91)	1.188 (30.18)	.125 (3.18)	19	1.203 (30.56)	1.327 (33.71)	.130 (3.30) .126 (3.20)
				17	1.078 (27.38)	1.060 (26.92)	.130 (3.30) .126 (3.20)					21	1.328 (33.73)	1.452 (36.88)	.130 (3.30) .126 (3.20)
				19	1.203 (30.56)	1.191 (30.25)	.130 (3.30) .126 (3.20)					23	1.453 (36.91)	1.570 (39.88)	.130 (3.30) .126 (3.20)
				21	1.328 (33.73)	1.322 (33.58)	.130 (3.30) .126 (3.20)								

General Information and Reference